



BLOWDOWN SEPARATORS

FEATURES

Design incorporates a water seal at the outlet which permits the operator to introduce cold water from the bottom to mix with the hot blowdown water in the separator. This reduces the outlet temperature to a level that makes it safe for discharge.

- Maximum boiler working pressure: 250 PSI.
- Maximum blowdown separator pressure: 65 PSI.
- Blowdown Separators are sized in accordance with National Board Standards.



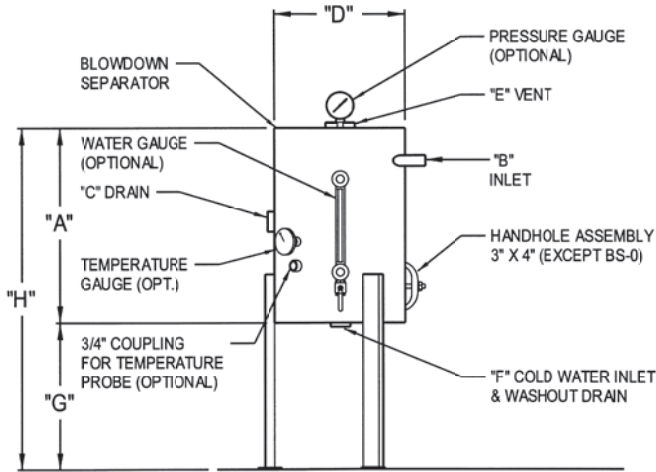
RECOMMENDED OPTIONAL EQUIPMENT

- 0-100lb. Pressure Gauge
- 0-200° Temperature Gauge
- Water Level Gauge
- Automatic Cooling Valve

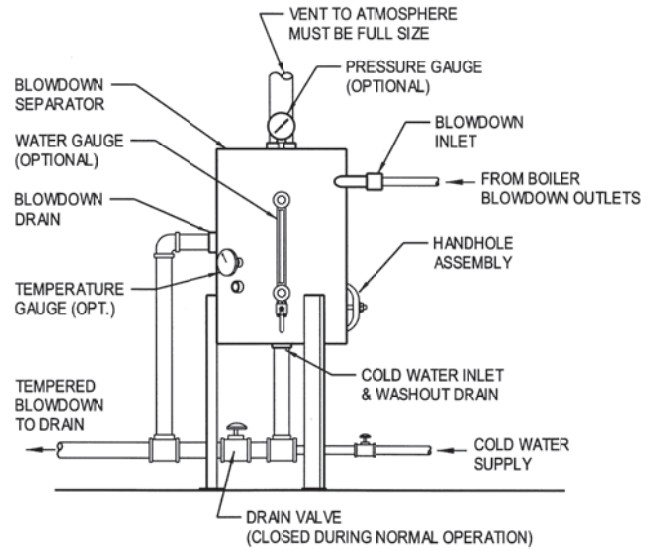


SPECIFICATIONS AND DATA

DIMENSIONS & FEATURES



SUGGESTED HOOK-UP TO BOILER



MODEL	HIGH PRESSURE BOILER HP (MAX)	LOW PRESSURE BOILER HP (MAX)	DIMENSIONS								SHIPPING WEIGHT
			A	B	C	D	E	F	G	H	
BS-0	15	N/A	18"	1"	2"	12"	2"	2"	14"	32"	125
BS-1	25	N/A	24"	1"	2"	16"	2-1/2"	2"	18"	42"	230
BS-2	60	15	30"	1-1/4"	2"	16"	3"	2"	18"	48"	260
BS-3	100	60	36"	1-1/2"	3"	16"	4"	2"	18"	54"	290
BS-4	150	100	42"	2"	3"	16"	4"	2"	18"	60"	320
BS-5	200	150	48"	2"	3"	16"	4"	2"	18"	66"	350

The BS-6, BS-7, BS-8 are available for use in Canada. Consult factory for CRN information, sizing, dimensions and pricing.